



Smitham Bridge Road, Hungerford, Berkshire RG17 0QP England
 Tel: +44 (0)1488 684585
 Fax: +44 (0)1488 684001
 E-mail: sales@compressor-products.com
 www.compressor-products.com



1 Data for Piston Rod Packing conversions or improvements

| | |
|---|------------------------------|
| 2 | Customer Name |
| 3 | Location |
| 4 | Compressor Plant Ref. Nr. |
| 5 | Make and Model of Compressor |
| 6 | Lube or Non-Lube Cylinders |

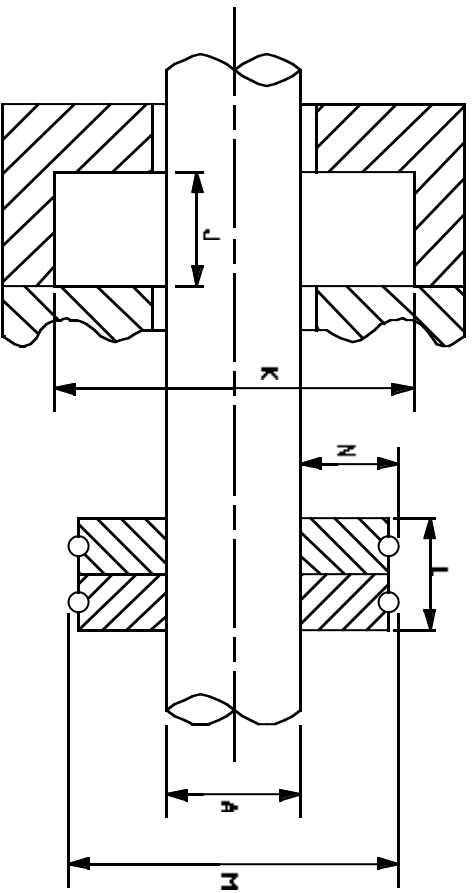
| | |
|---|---|
| 7 | Gas composition |
| 8 | Indicate gas dryness condition as appropriate Mol Wt |

| 9 | | Stage 1 | Stage 2 | Stage 3 | Stage 4 |
|----|---|---------|---------|---------|---------|
| 10 | Speed (RPM) Piston Rod diameter* (mm) (A) | | | | |
| 11 | Stroke (mm) | | | | |
| 12 | Stuffing Box bore (mm) (B) | | | | |
| 13 | Stuffing Box depth (mm) (C) | | | | |
| 14 | Flange thickness (mm) (D) | | | | |
| 15 | Flange diameter (mm) (E) | | | | |
| 16 | Size of Studs (diameter) - Stand out from frame (mm) (F) | | | | |
| 17 | Nr. of Flange Studs (Note stud relation to vertical CL) (G) | | | | |
| 18 | Pitch circle diameter of studs (mm) (H) | | | | |
| 19 | Size and location of cooling, lube or vent cons (R) | | | | |
| 20 | Maker's part number of packing case | | | | |

| 21 | | Stage 1 | Stage 2 | Stage 3 | Stage 4 |
|----|--|---------|---------|---------|---------|
| 22 | Packing Cup Groove width* (mm) (J) | | | | |
| 23 | Packing Cup Groove diameter (mm) (K) | | | | |
| 24 | Number of Grooves Cylinder side of vent Outside vent | | | | |
| 25 | Packing Case Cooled yes/no | | | | |
| 26 | Existing Packing Rings Type Maker's part number Axial Ring width (mm) (L) OD over spring (mm) (M) | | | | |
| 27 | Piston Rod material | | | | |
| 28 | Clearance between flanges in distance piece (mm) | | | | |
| 29 | Suction pressure (bar g) | | | | |
| 30 | Discharge pressure (bar g) | | | | |
| 31 | Suction temperature (°C) | | | | |
| 32 | Discharge temperature (°C) | | | | |

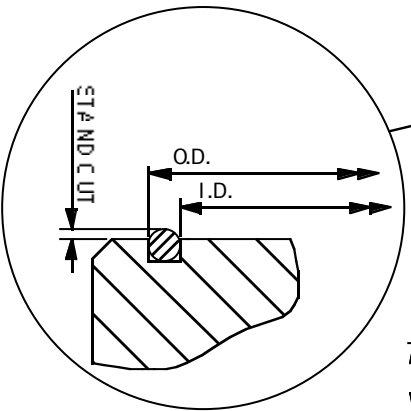
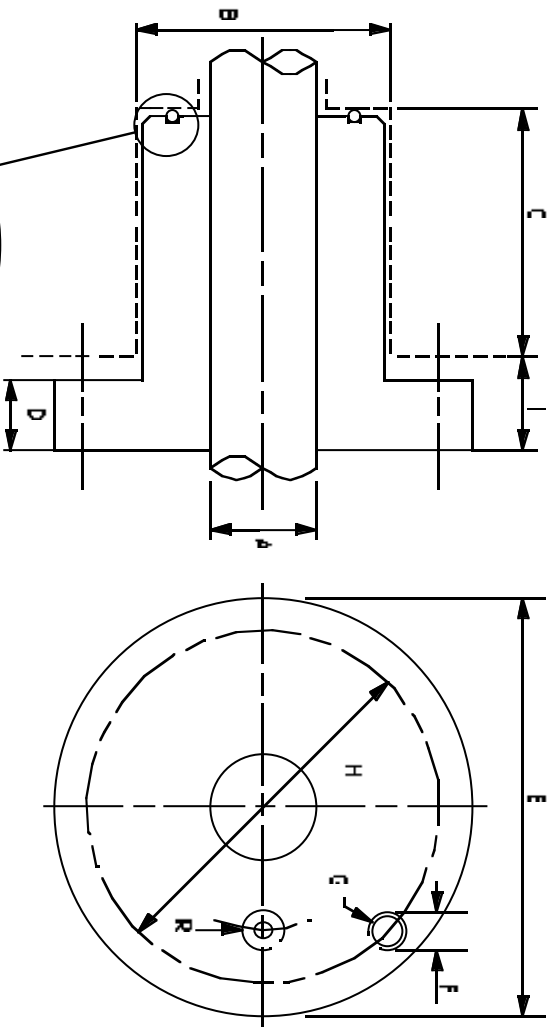
33 **Notes - History of operation, lives obtained, materials used**

34 * Critical dimensions - required accuracy ±0.025mm
 35 Please supply a sketch or drawing, if possible, of existing packing case showing lube vent positions, etc. summarising above listed data



CUP AND PACKING DETAIL

NOTE: ALWAYS MEASURE CUP AS A PRIORITY (J & K). MEASURE 'M' ON ROD IF POSSIBLE TO ALLOW FOR CORRECT CUP CLEARANCE.



GASKET DETAILS:
 ROUND SECTION.
 RECTANGULAR SECTION.



STUFFING BOX AND PACKING CASE DETAIL

CRDOC REF 298042